



# GRUPO MF&A

*Building Sustainability*

**TOGETHER**



# WHO WE ARE

---



CONSULTING GROUP IN THE AREAS OF  
**ENVIRONMENT | BIODIVERSITY | SOCIAL | SUSTAINABILITY**



MF&A  
Portugal



MF&A  
Moçambique



Ecofield

Company founded in 2006 and based in Portugal, working in the fields of environment, social and sustainability.

Company founded in 2012 and based in Maputo, providing environmental consultancy services in the Mozambican market.

Company dedicated to the field of ecology, founded in 2010 and based in Portugal.

► **2022 | Branch opened in São Tomé and Príncipe**

As a result of our practically constant presence in São Tomé and Príncipe since 2011.



## **MISSION**

---

Through a dynamic approach and constant presence, we ensure the expectations of our Clients and Partners by providing them with security and confidence in our expertise, contributing to their success and growth.

## **VISION**

---

To be a Group that supports the creation of value for our Clients by providing continuous support, contributing to the growth and maturity of the market in which we operate.

## **VALUES**

---

Team Spirit  
Customer Focus

Excellence in Service  
Innovation in Solutions

Proximity and Trust  
Availability





# OUR SERVICES



**Environmental Studies**



**Sustainability and ESG**



**Water resources management**



**Land use planning and management support**



**Social Studies and Stakeholder Engagement**



**Environmental Management in Construction**



**Biodiversity**



**Climate Change and carbon footprint**



**Licensing Support, technical advice and assistance**



**Environmental follow-ups and monitoring**



**Ecological Landscape Integration**



**Other studies and projects**



**34**

## **SPECIALIST CONSULTANTS**

- 12** Environmental Engineers
- 7** Biologists
- 7** Geographers
- 1** GIS Specialist
- 1** Maritime Law Specialist
- 2** Biophysical Engineers
- 1** Forestry Engineer
- 1** Zootechnical Engineer
- 1** Landscape Architect
- 1** Marketing and Communication Specialist



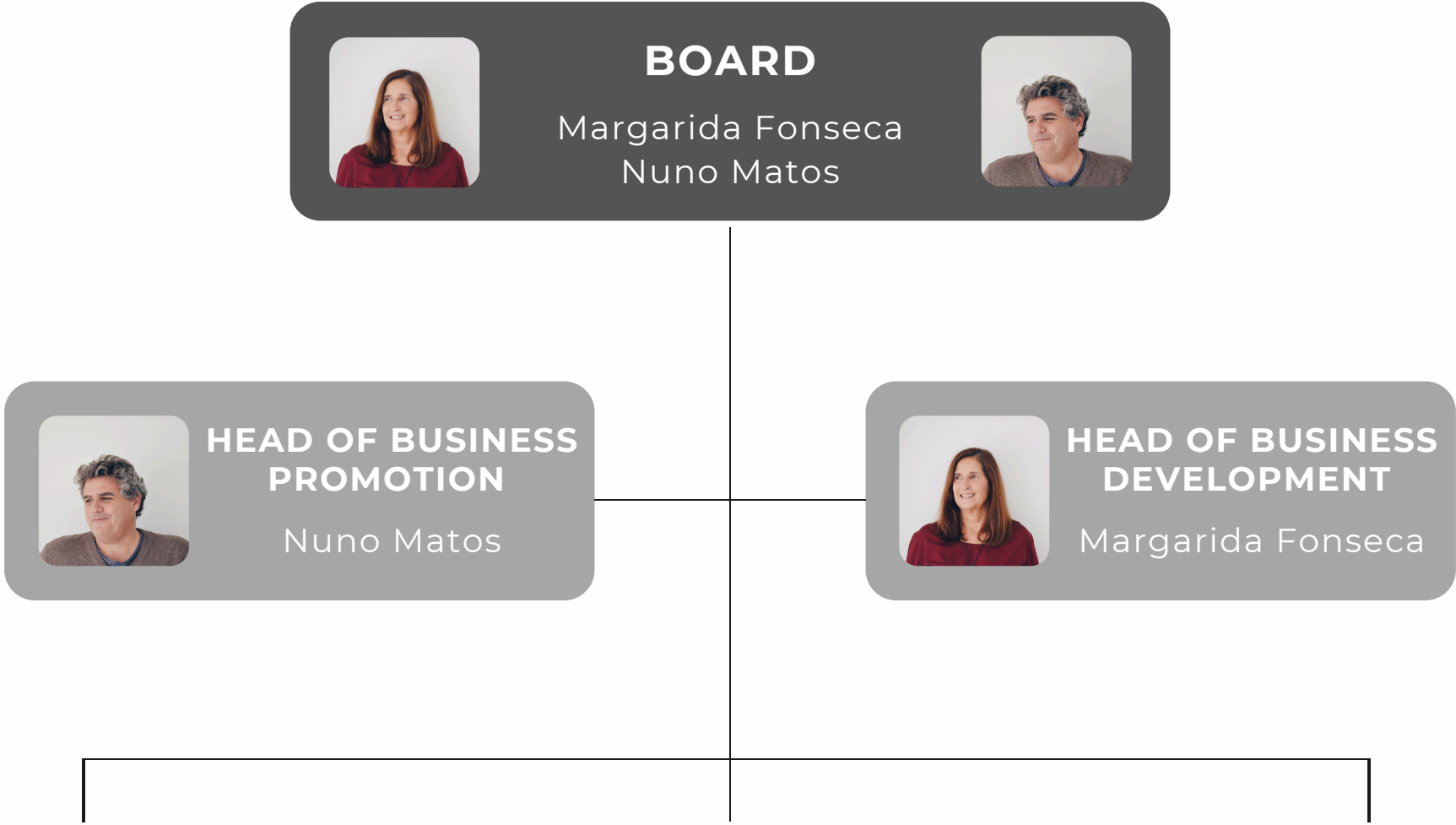
## **EXTENSIVE LIST OF SUBCONTRACTORS**

Multiple Areas of Expertise

# OUT TEAM



# ORGANIZATION CHART





# ORGANIZATION CHART

**GENERAL COORDINATOR**  
António Faria

**GENERAL SUPERVISOR**  
Filipa Colaço

**PROJECT MANAGER**

**SENIOR CONSULTANT**


**JUNIOR CONSULTANT**

**SENIOR SPECIALIST CONSULTANT**


**JUNIOR SPECIALIST CONSULTANT**

**TRAINEE**

**PERMANENT CONSULTANTS**


 António Faria

 Ligia Mendes


 Filipa Colaço


 Isabel Salvador


 Margarida Fonseca


 Nuno Matos


 Inês Mendes

 Marta Machado

 Débora Rodrigues

 Alexandra Amaral


 Jessica Silva


 Ana Neves

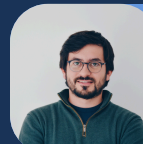
 Diogo D'Oliveira

 Gonçalo Ferreira


 Inês Figueiredo

 Sofia Rodrigues

 António Marques

 Duarte Belo

 Tiago Martins

 João Morais

 Mariana Varela

Sofia Delgado  
Carla Fernandes

Miguel Gamboa  
Cláudia Maravilha

# ORGANIZATION CHART



## CONSULTANTS



Sandra Gouveia

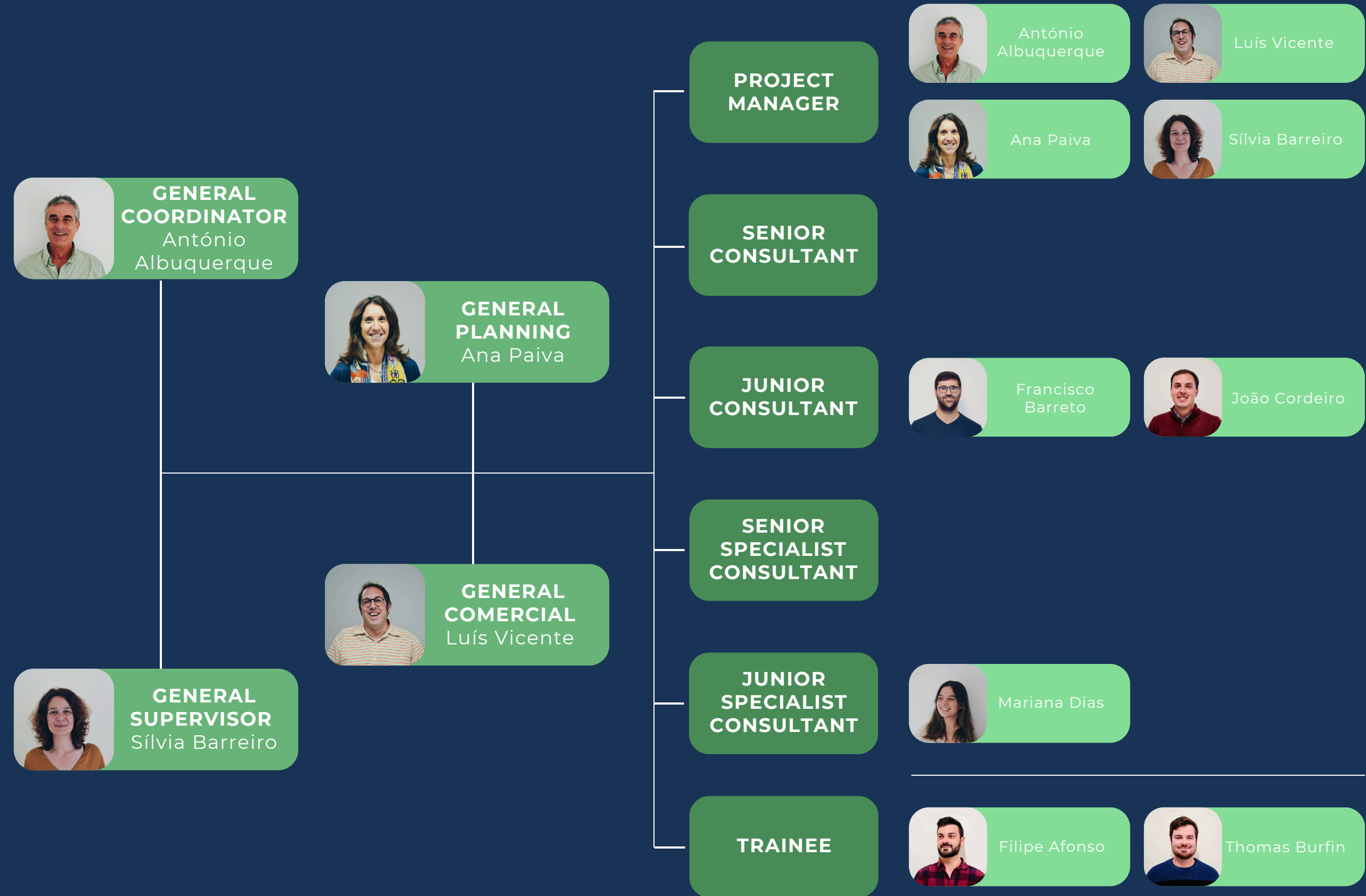


José Gravata



Ecofield

# ORGANIZATION CHART



# ORGANIZATION CHART



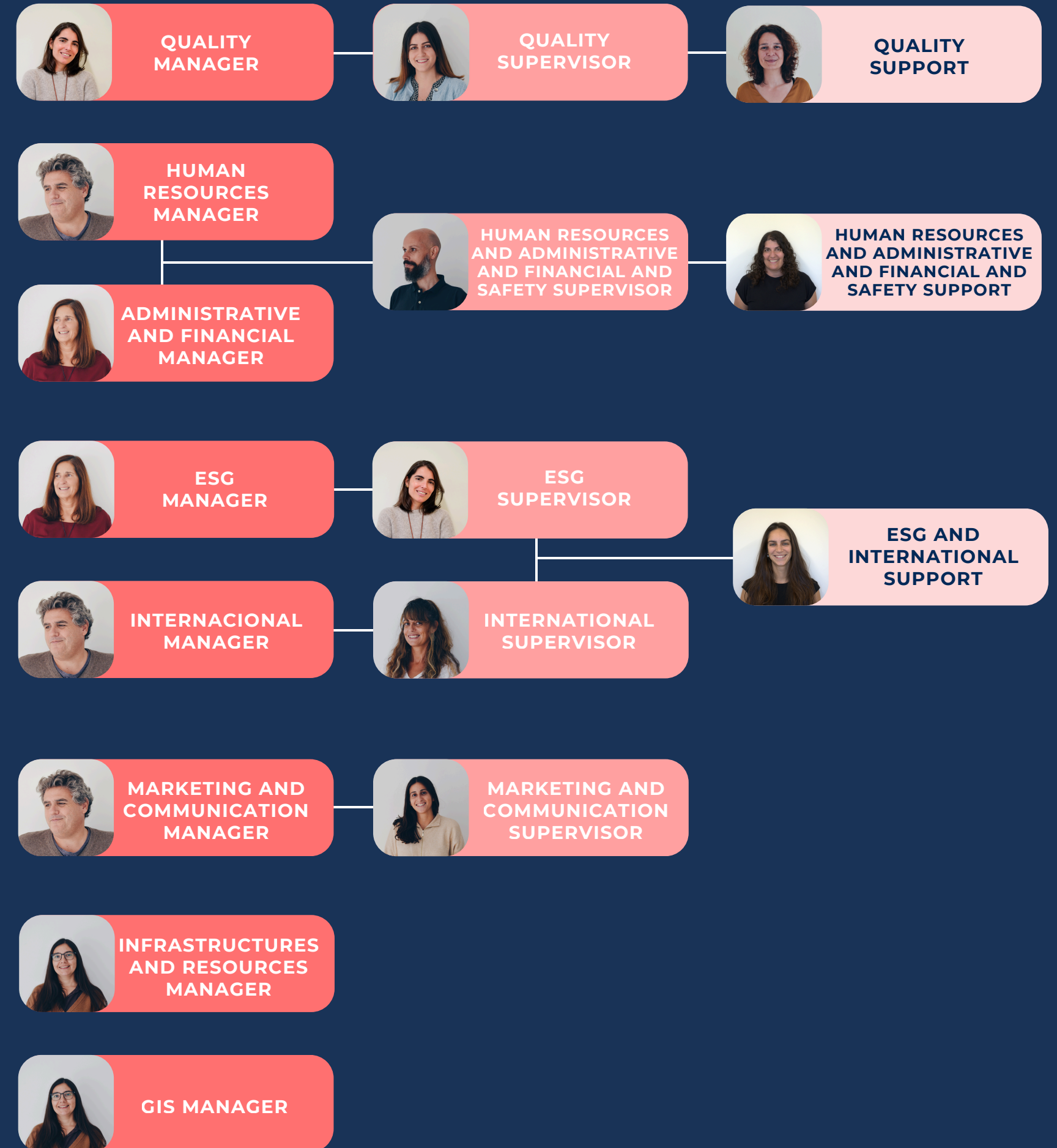
MF&A  
Portugal



MF&A  
Moçambique



Ecofield



# PARTNERS

---



## Margarida Fonseca

Founding partner of MF&A Group and Partner. Graduated in Environmental Engineering, with a post-graduate degree in Integrated Systems Management - Environment, Safety and Quality and Master in Environmental Engineering - Environmental Management and Systems. She has extensive experience (over 32 years) in the direction and coordination of environmental studies and projects.

✉ [mfonseca@mfassociados.pt](mailto:mfonseca@mfassociados.pt)



## António Albuquerque

Founding partner of Ecofield. Degree in Forest Engineering, branch of Natural Resources Management and Master in Natural Resources Management. He has more than 26 years of experience working in the field of Ecology. Specialist in ecology.

✉ [aalbuquerque@ecofield.pt](mailto:aalbuquerque@ecofield.pt)



## Nuno Matos

Founding partner of MF&A Group and Partner. Graduated in Biology and Master in Natural Resources Management. He has over 30 years of professional experience with relevant experience in project direction and management of multidisciplinary teams in the environmental area. He was President of the Portuguese Association for Impact Assessment (APAI) for two biennia.

✉ [nfmatos@mfassociados.pt](mailto:nfmatos@mfassociados.pt)



## Luís Silva

Founding partner of MF&A Group and Partner. Graduated in Civil Engineering. He is currently CEO/General Manager of AJS Transportes e Logística, the main transportation and logistics company in Angola, being considered one of the greatest Angolan entrepreneurs of the "new generation", leading the company in its regional and industrial expansion.

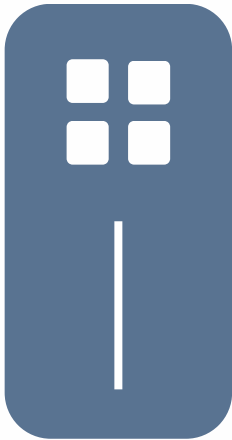
# WHERE WE WORKED

---



# OUR WORK

---



**+1000**

**TOTAL  
PROJECTS**



**+50**

**INTERNATIONAL  
PROJECTS**



# SOME OF OUR STUDIES



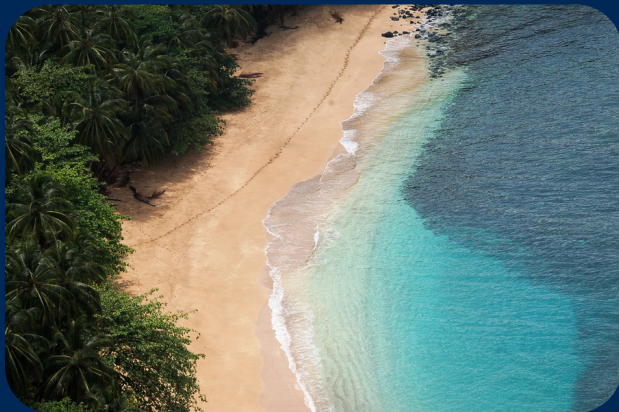
📍 PORTUGAL

**Intermunicipal Climate Change Adaptation Plan of Tejo River**



📍 SÃO TOMÉ AND PRÍNCIPE

**São Tomé and Príncipe National Land Use Plan and District and Regional Management Plans**



See all our projects: <https://www.mfassociados.pt/en/portfoliogrupomfa>

# SOME OF OUR STUDIES



📍 MOZAMBIQUE

**Environmental and Social Impact Assessment (ESIA) of Tereane Photovoltaic Power Plant Project, Cuamba, Niassa**



📍 SÃO TOMÉ AND PRÍNCIPE

**Sustainable Development Plan and Agenda of Príncipe Island**



# SOME OF OUR STUDIES



📍 PORTUGAL

**Environmental Impact Assessment (EIA) of Curral das Freiras (Madeira Island) Cable Car System and an Adventure Park**



📍 PORTUGAL

**Environmental Impact Assessment (EIA) of Lisbon Metro Project Rato/Cais do Sodré Connection**



See all our projects: <https://www.mfassociados.pt/en/portfoliogrupomfa>

# SOME OF OUR STUDIES



📍 PORTUGAL

**Environmental Impact Assessment (EIA) of Cercal Photovoltaic Plant and Associated Overhead Powerline**



📍 PORTUGAL

**Environmental Impact Assessment (EIA) of H2-Évora Green Hydrogen Production Project**



See all our projects: <https://www.mfassociados.pt/en/portfoliogrupomfa>

# SOME OF OUR STUDIES



📍 PORTUGAL

**Environmental Impact Assessment (EIA) of  
Ribeira de Pena - Vieira do Minho 1/2 400 kV  
Overhead Powerline**



📍 CAPE VERDE

**Environmental and Social Management Plan  
(ESMP) for the Mindelo Cruise Terminal  
Project in São Vicente Island**



See all our projects: <https://www.mfassociados.pt/en/portfoliogrupomfa>

# SOME OF OUR STUDIES



📍 PORTUGAL

**Stakeholder Involvement Study and Shared Value Creation (CSV) Plan for Pereiro Photovoltaic Power Plant**



📍 PORTUGAL

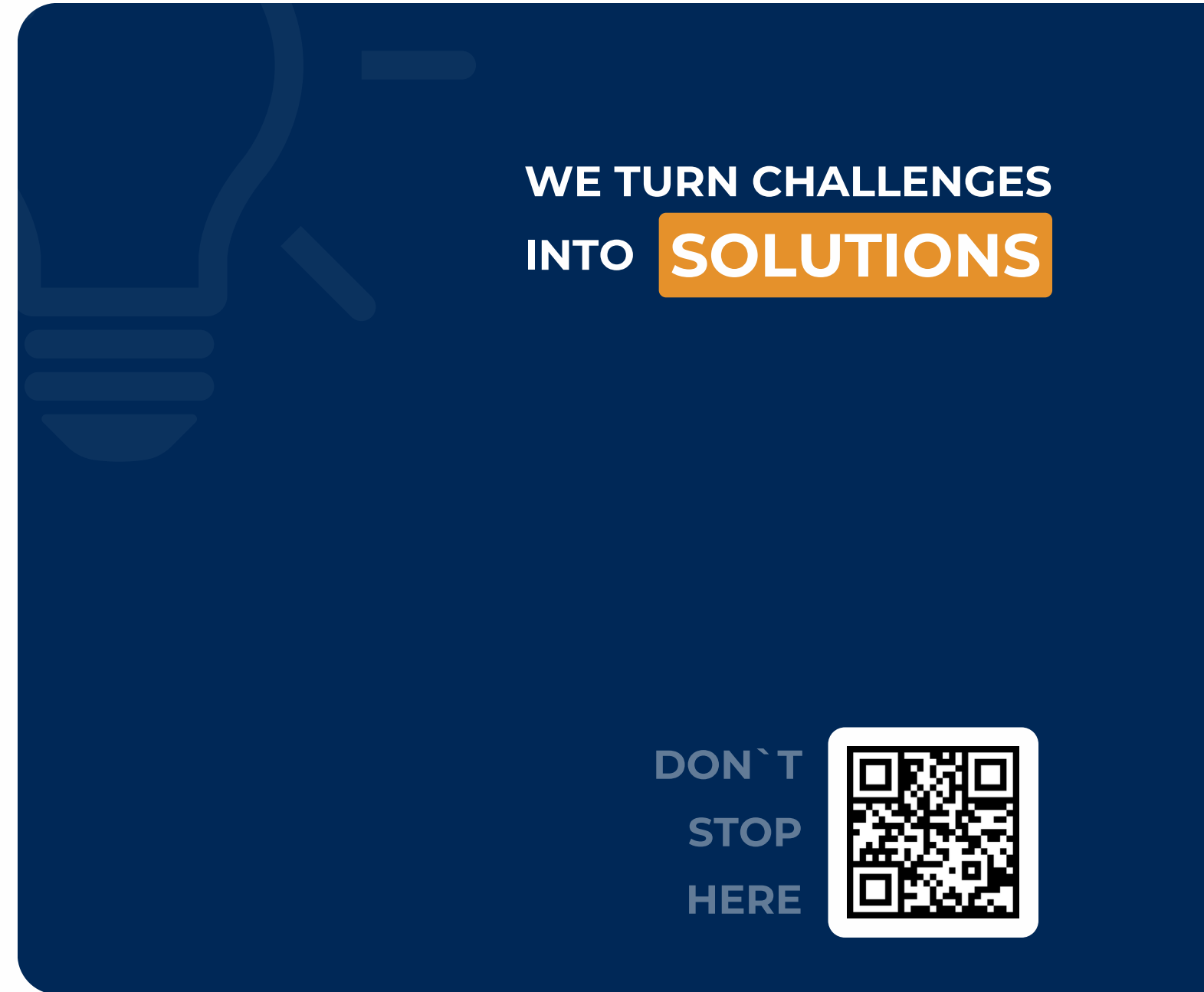
**Strategic Environmental Assessment (SEA) of the Development and Investment Plan for the Electricity Transmission Network (PDIRT) and for the Natural Gas Network (PDIRGN) 2022-2031**



See all our projects: <https://www.mfassociados.pt/en/portfoliogrupomfa>

# SOME OF OUR CLIENTS





✉ [mfassociados@mfassociados.pt](mailto:mfassociados@mfassociados.pt)

🌐 [mfassociados.pt](http://mfassociados.pt)





GRUPO  
MF&A

*Building Sustainability*  
**TOGETHER**

“ You can design and create, and build the most wonderful place in the world. But it takes people to make the dream a reality.

**WALT DISNEY**