



GRUPO
MF&A

Building Sustainability

TOGETHER



WHO WE ARE



CONSULTING GROUP IN THE AREAS OF
ENVIRONMENT | BIODIVERSITY | SOCIAL | SUSTAINABILITY



Company founded in 2006 and based in Portugal, working in the fields of environment, social and sustainability.



Company founded in 2012 and based in Maputo, providing environmental consultancy services in the Mozambican market.



Company dedicated to the field of ecology, founded in 2010 and based in Portugal.

► **2022 | Branch opened in São Tomé and Príncipe**

As a result of our practically constant presence in São Tomé and Príncipe since 2011.



MISSION

Through a dynamic approach and constant presence, we ensure the expectations of our Clients and Partners by providing them with security and confidence in our expertise, contributing to their success and growth.



VISION

To be a Group that supports the creation of value for our Clients by providing continuous support, contributing to the growth and maturity of the market in which we operate.



VALUES

Team Spirit
Customer Focus

Excellence in Service
Innovation in Solutions

Proximity and Trust
Availability





OUR SERVICES



Environmental Studies



Biodiversity



**Sustainability
and ESG**



**Climate Change and
carbon footprint**



**Water resources
management**



**Licensing Support,
technical advice and
assistance**



**Land use planning and
managemet support**



**Environmental follow-ups
and monitoring**



**Social Studies and
Stakeholder
Engagement**



**Ecological Landscape
Integration**



**Environmental
Management in
Construction**



**Other studies and
projects**



34

SPECIALIST CONSULTANTS

- 12** Environmental Engineers
- 7** Biologists
- 7** Geographers
- 1** GIS Specialist
- 1** Maritime Law Specialist
- 2** Biophysical Engineers
- 1** Forestry Engineer
- 1** Zootechnical Engineer
- 1** Landscape Architect
- 1** Marketing and Communication Specialist



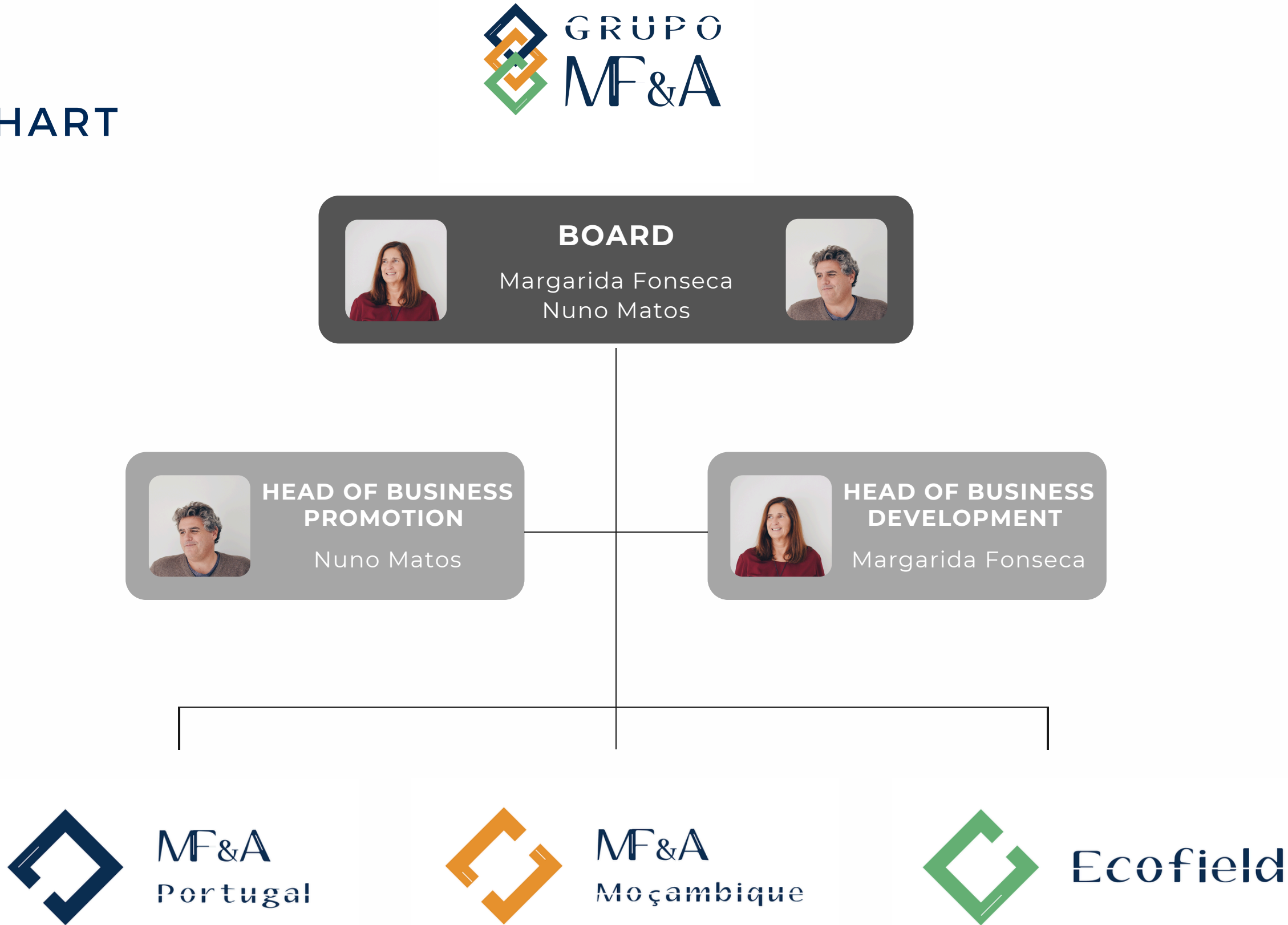
EXTENSIVE LIST OF SUBCONTRACTORS

Multiple Areas of Expertise

OUT TEAM



ORGANIZATION CHART



ORGANIZATION CHART



**GENERAL
COORDINATOR**
António Faria

**PROJECT
MANAGER**

**SENIOR
CONSULTANT**

**JUNIOR
CONSULTANT**

**SENIOR
SPECIALIST
CONSULTANT**

**JUNIOR
SPECIALIST
CONSULTANT**

TRAINEE

**PERMANENT
CONSULTANTS**



António Faria



Ligia Mendes




Filipa Colaço



Isabel Salvador



Margarida Fonseca



Nuno Matos




Inês Mendes



Marta Machado



Débora Rodrigues



Alexandra Amaral



Fábio Cardona



Jessica Silva



Ana Neves



Diogo D'Oliveira



Gonçalo Ferreira



Inês Figueiredo



Sofia Rodrigues




António Marques



Duarte Belo



Tiago Martins



João Morais



Mariana Varela

Sofia Delgado
Carla Fernandes

Miguel Gamboa
Cláudia Maravilha



ORGANIZATION CHART



CONSULTANTS

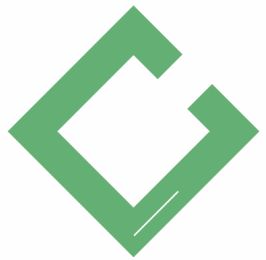
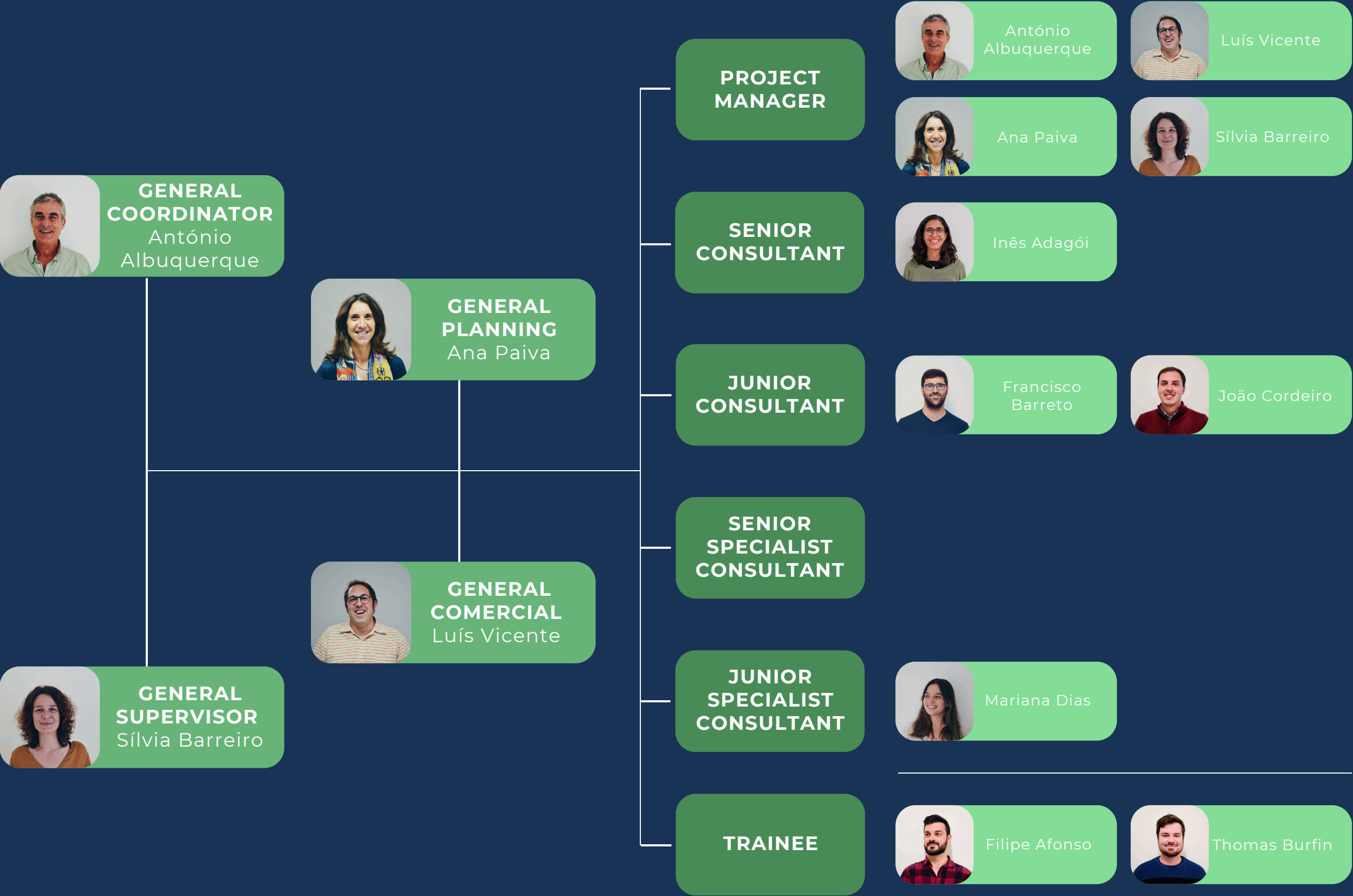


Sandra Gouveia



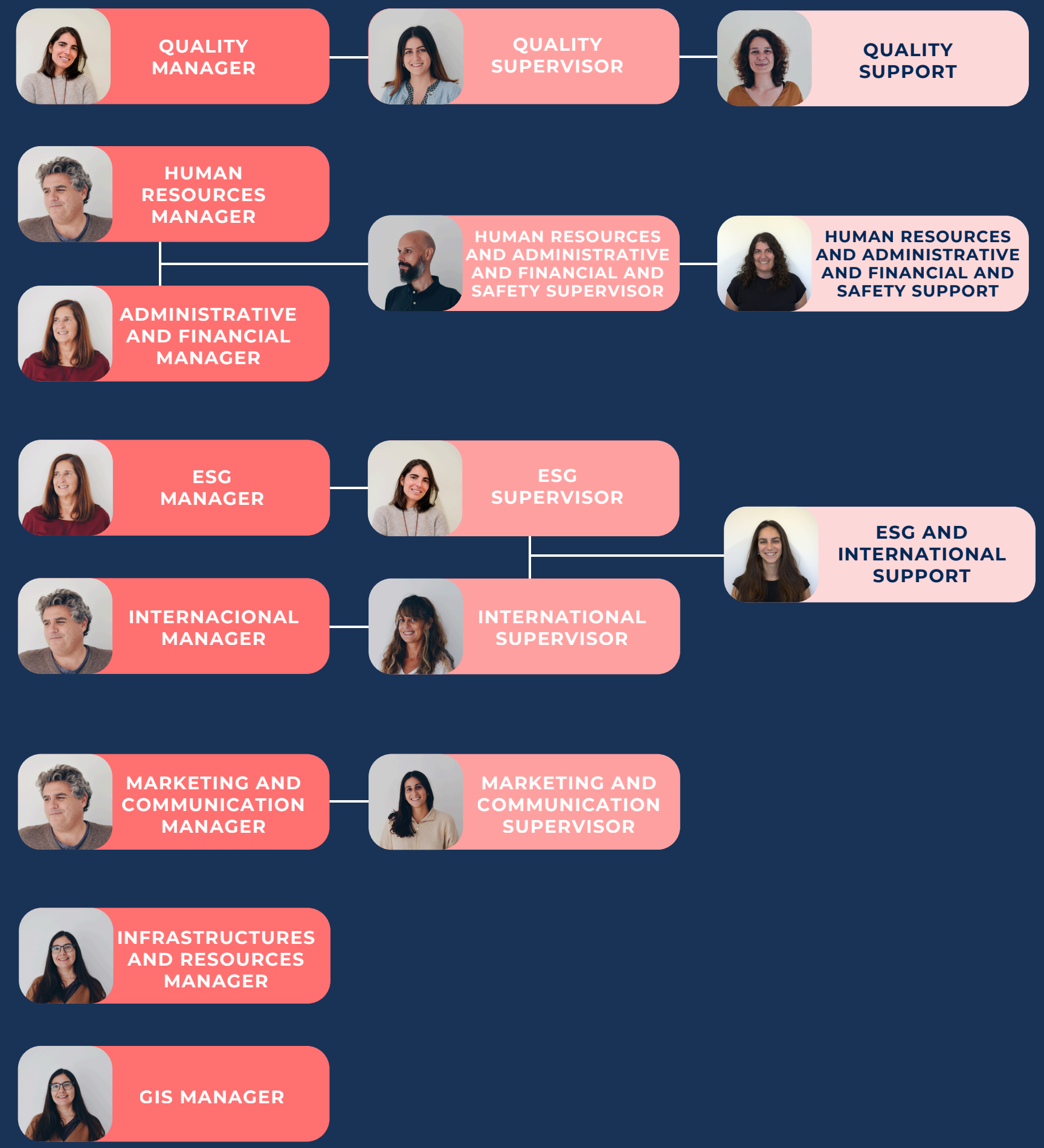
José Gravata

ORGANIZATION CHART



Ecofield

ORGANIZATION CHART



PARTNERS



Margarida Fonseca

Founding partner of MF&A Group and Partner. Graduated in Environmental Engineering, with a post-graduate degree in Integrated Systems Management - Environment, Safety and Quality and Master in Environmental Engineering - Environmental Management and Systems. She has extensive experience (over 32 years) in the direction and coordination of environmental studies and projects.

✉ mfonseca@mfassociados.pt



Nuno Matos

Founding partner of MF&A Group and Partner. Graduated in Biology and Master in Natural Resources Management. He has over 30 years of professional experience with relevant experience in project direction and management of multidisciplinary teams in the environmental area. He was President of the Portuguese Association for Impact Assessment (APAI) for two biennia.

✉ nfmatos@mfassociados.pt



António Albuquerque

Founding partner of Ecofield. Degree in Forest Engineering, branch of Natural Resources Management and Master in Natural Resources Management. He has more than 26 years of experience working in the field of Ecology. Specialist in ecology.

✉ aalbuquerque@ecofield.pt



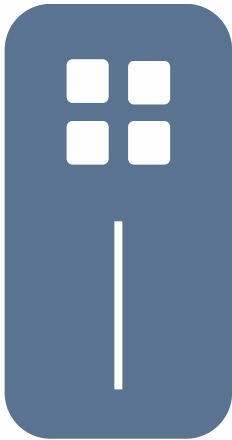
Luís Silva

Founding partner of MF&A Group and Partner. Graduated in Civil Engineering. He is currently CEO/General Manager of AJS Transportes e Logística, the main transportation and logistics company in Angola, being considered one of the greatest Angolan entrepreneurs of the "new generation", leading the company in its regional and industrial expansion.

WHERE WE WORKED



OUR WORK



+1000

**TOTAL
PROJECTS**



+50

**INTERNATIONAL
PROJECTS**



SOME OF OUR STUDIES



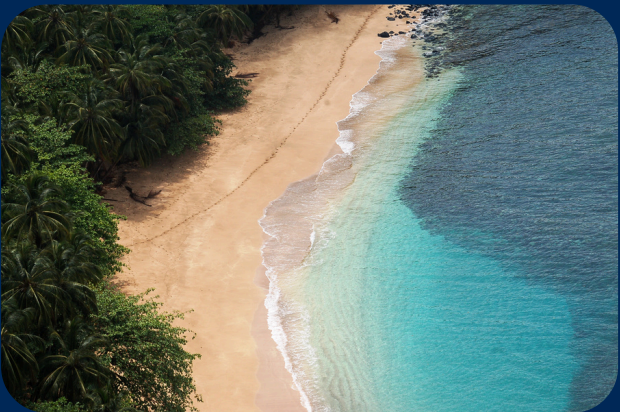
📍 PORTUGAL

**Intermunicipal Climate Change Adaptation
Plan of Tejo River**



📍 SÃO TOMÉ AND PRÍNCIPE

**São Tomé and Príncipe National Land Use
Plan and District and Regional Management
Plans**



Se all our projects: <https://www.mfassociados.pt/en/portfoliogrupomfa>

SOME OF OUR STUDIES



📍 MOZAMBIQUE

Environmental and Social Impact Assessment (ESIA) of Teterane Photovoltaic Power Plant Project, Cuamba, Niassa



📍 SÃO TOMÉ AND PRÍNCIPE

Sustainable Development Plan and Agenda of Príncipe Island



Se all our projects: <https://www.mfassociados.pt/en/portfoliogrupomfa>

SOME OF OUR STUDIES



📍 PORTUGAL

Environmental Impact Assessment (EIA) of Curral das Freiras (Madeira Island) Cable Car System and an Adventure Park



📍 PORTUGAL

Environmental Impact Assessment (EIA) of Lisbon Metro Project Rato/Cais do Sodré Connection



See all our projects: <https://www.mfassociados.pt/en/portfoliogrupomfa>

SOME OF OUR STUDIES



📍 PORTUGAL

**Environmental Impact Assessment (EIA) of
Cercal Photovoltaic Plant and Associated
Overhead Powerline**



📍 PORTUGAL

**Environmental Impact Assessment (EIA) of
H2-Évora Green Hydrogen Production Project**



Se all our projects: <https://www.mfassociados.pt/en/portfoliogrupomfa>

SOME OF OUR STUDIES



PORTUGAL

**Environmental Impact Assessment (EIA) of
Ribeira de Pena - Vieira do Minho 1/2 400 kV
Overhead Powerline**



CAPE VERDE

**Environmental and Social Management Plan
(ESMP) for the Mindelo Cruise Terminal
Project in São Vicente Island**



Se all our projects: <https://www.mfassociados.pt/en/portfoliogrupomfa>

SOME OF OUR STUDIES



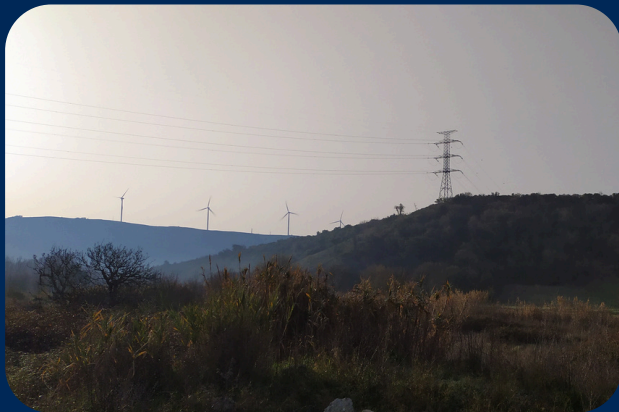
📍 PORTUGAL

Stakeholder Involvement Study and Shared Value Creation (CSV) Plan for Pereiro Photovoltaic Power Plant



📍 PORTUGAL

Strategic Environmental Assessment (SEA) of the Development and Investment Plan for the Electricity Transmission Network (PDIRT) and for the Natural Gas Network (PDIRGN) 2022-2031



Se all our projects: <https://www.mfassociados.pt/en/portfoliogrupomfa>

SOME OF OUR CLIENTS





WE TURN CHALLENGES
INTO **SOLUTIONS**

DON'T
STOP
HERE



 mfassociados@mfassociados.pt

 mfassociados.pt





Building Sustainability
TOGETHER

“ You can design and create, and build the most wonderful place in the world. But it takes people to make the dream a reality.

WALT DISNEY